

# Description

---

This article is to show you instruction of how to wire and setup the alarm input from the recorder.

# Prerequisites

---

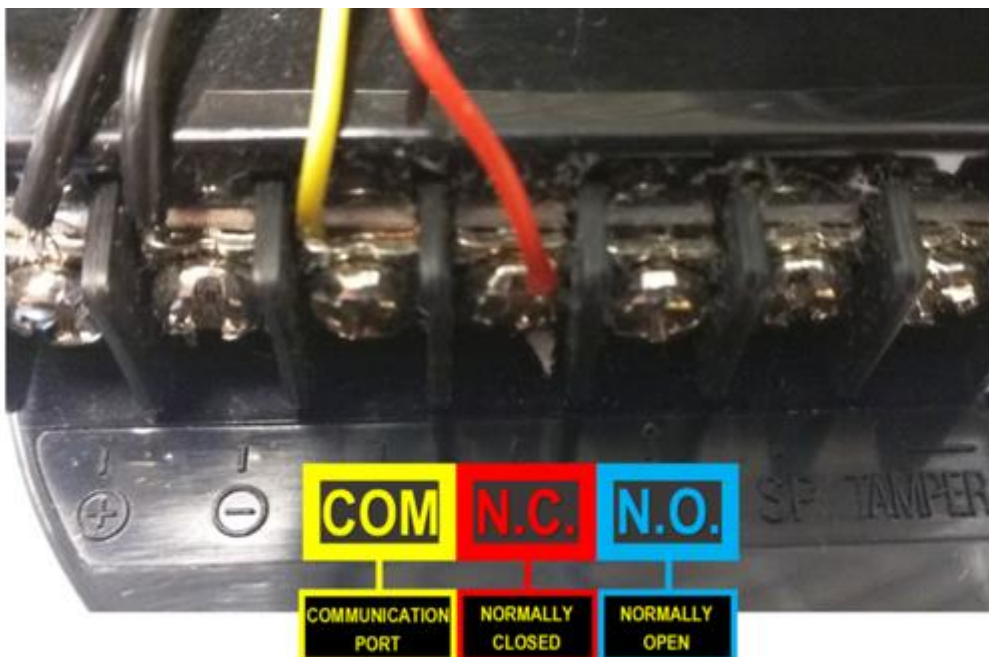
1. NVR/HCVR/DVR with Alarm IN relay functionality
2. Alarm input device. Such as: Toggle switch or motion sensor.
3. Power supply unit rated for the Electronic Buzzer (and the NVR/HCVR/DVR)

# Step by Step Instructions

---

**Please Note: Setting up alarm triggers will only work with recorders that have alarm inputs.**

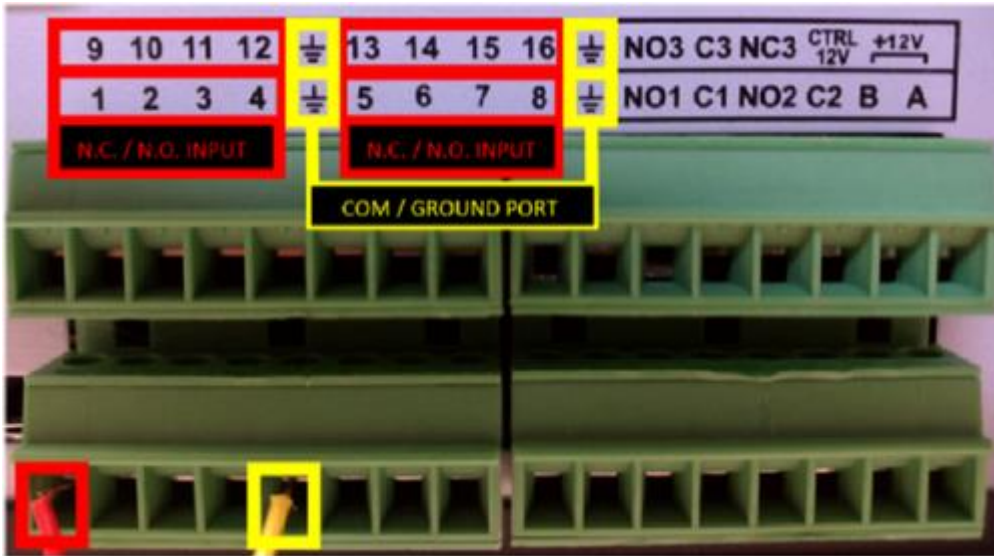
**STEP 1.** Identify the connections on the Alarm Trigger.



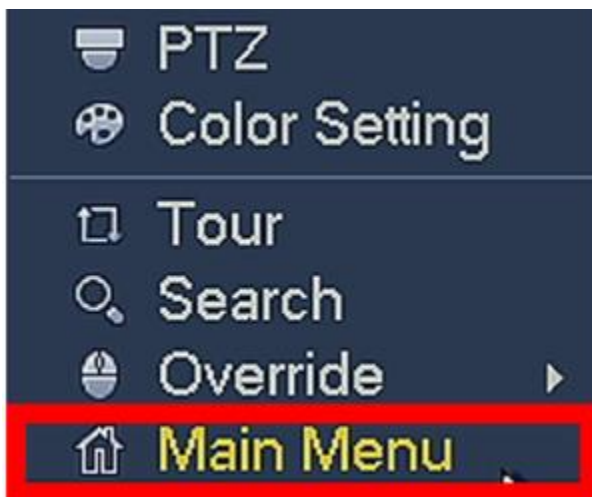
- **COM:** Communication Port or Ground N.C: Normally Closed - A Trigger that initiates when an object disrupts the communication line of 2 sensors
- **N.C:** Normally Closed - A Trigger that initiates when an object disrupts the communication line of 2 sensors
- **N.O:** Normally Open - A Trigger that initiates when an object completes the communication line of 2 sensors.

**STEP 2.** Connect the N.C. (Normally Closed) wire to one of the numbered ports. Connect the COM wire to the COM / Ground Port.

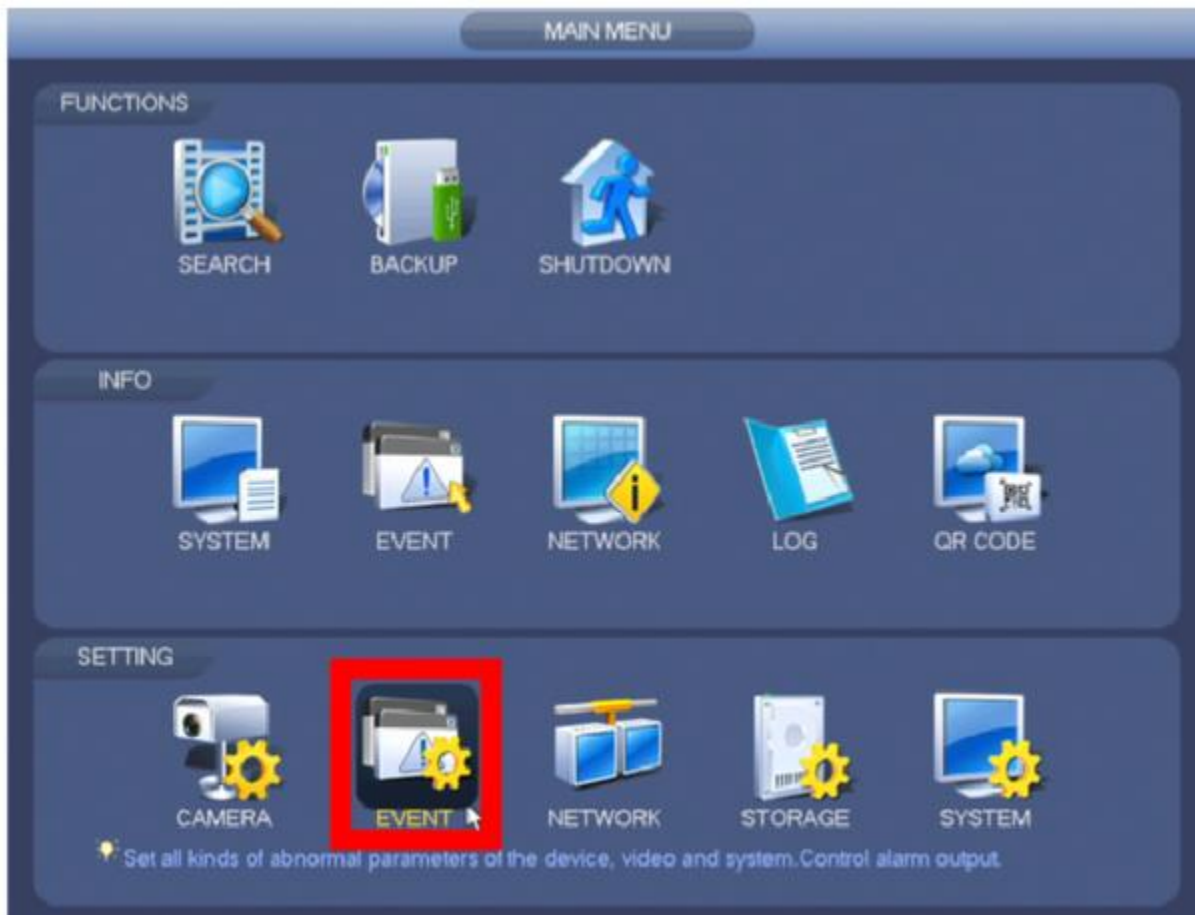
- Alarm Inputs are grouped in fours.
- Each group uses the Communication/Ground Port on the right. Alarm Inputs are grouped in fours. Each group uses the Communication/Ground Port on the right.



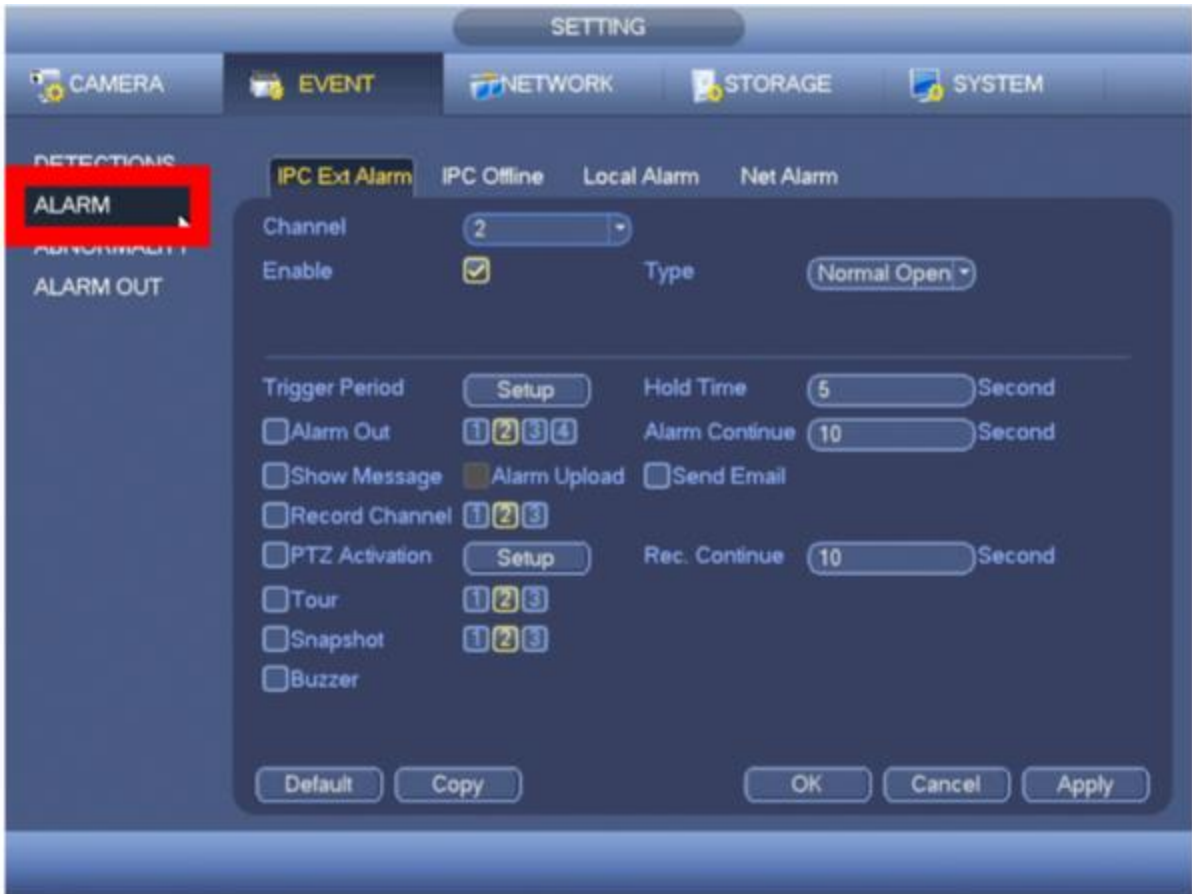
**STEP 3.** From your local GUI, right click on your live view screen and click on **Main Menu**.



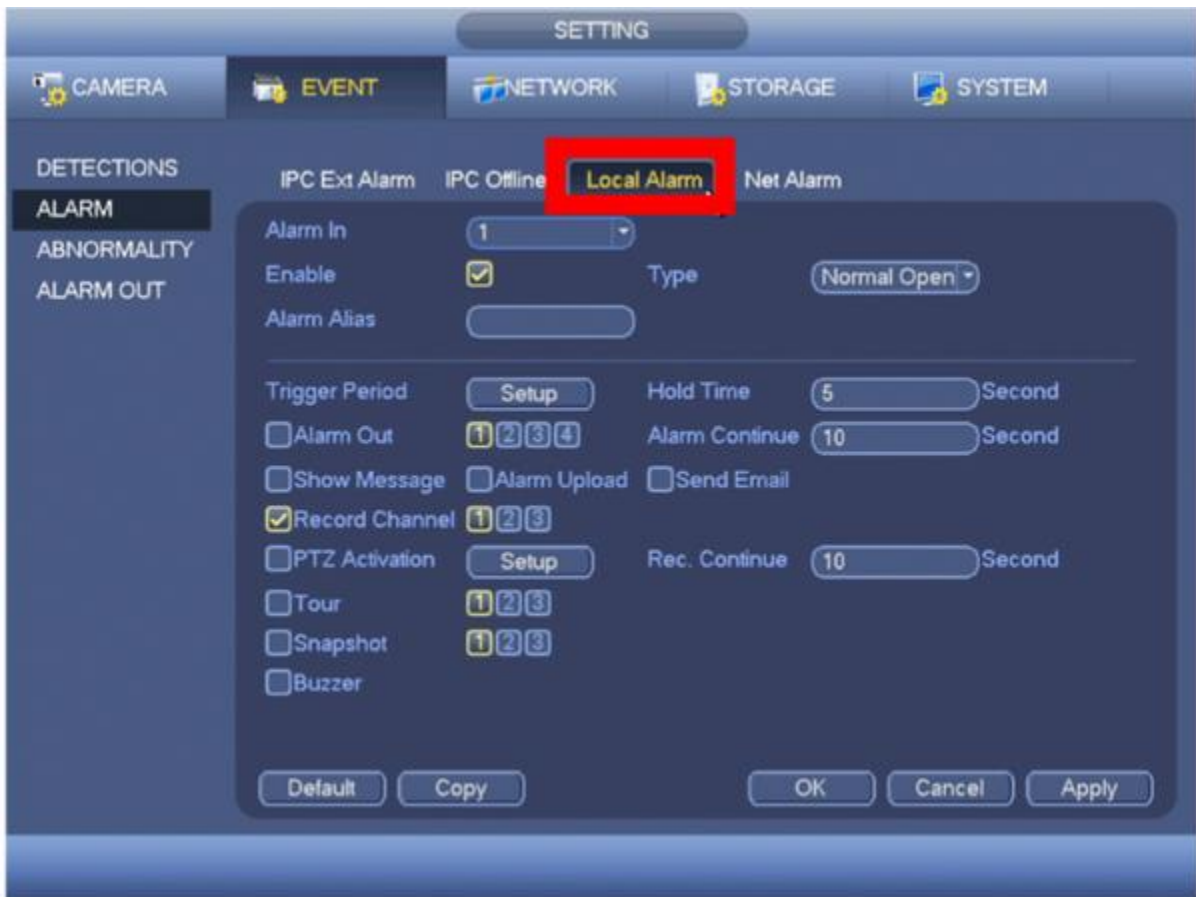
**STEP 4.** Click **Event** from the Settings menu option.



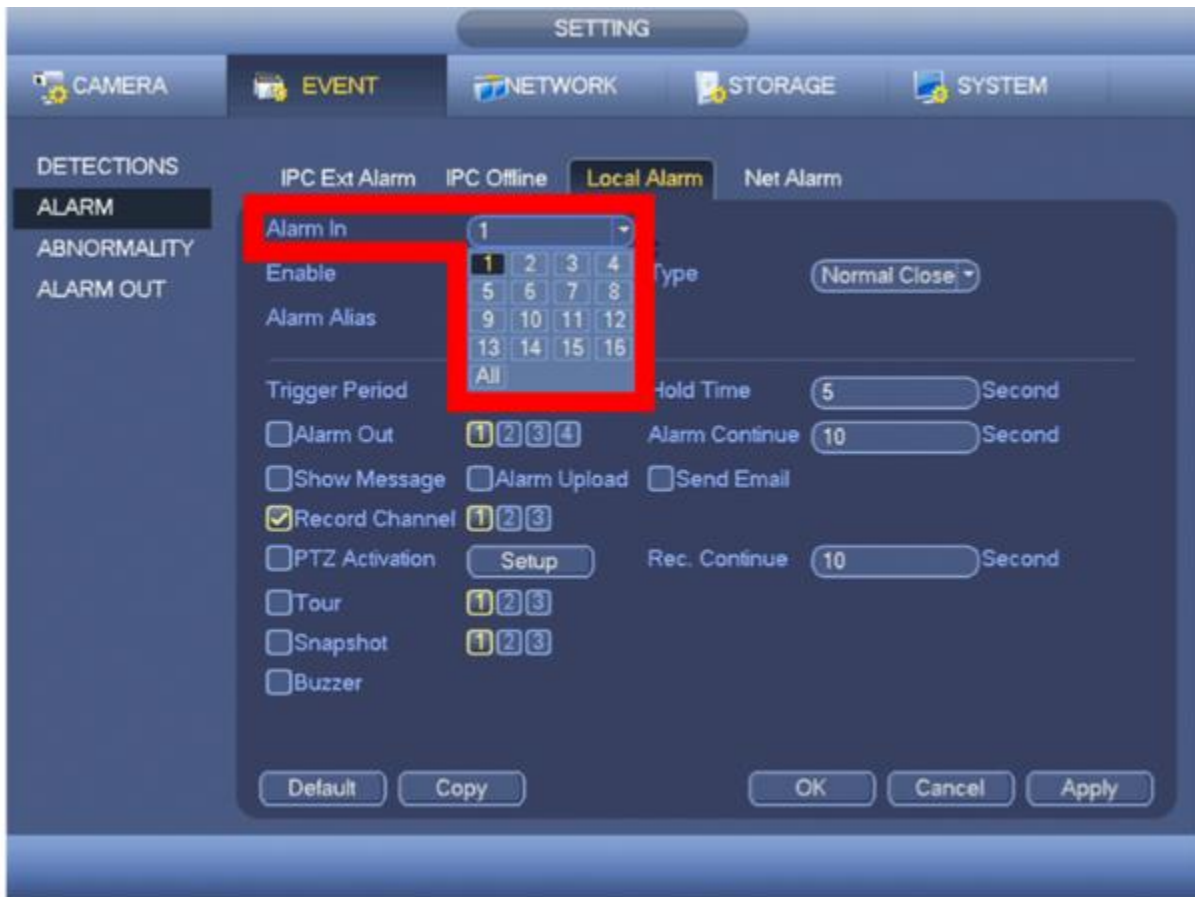
**STEP 5.** From the left menu tab, click **Alarm**.



**STEP 6.** Click on **Local Alarm** tab.

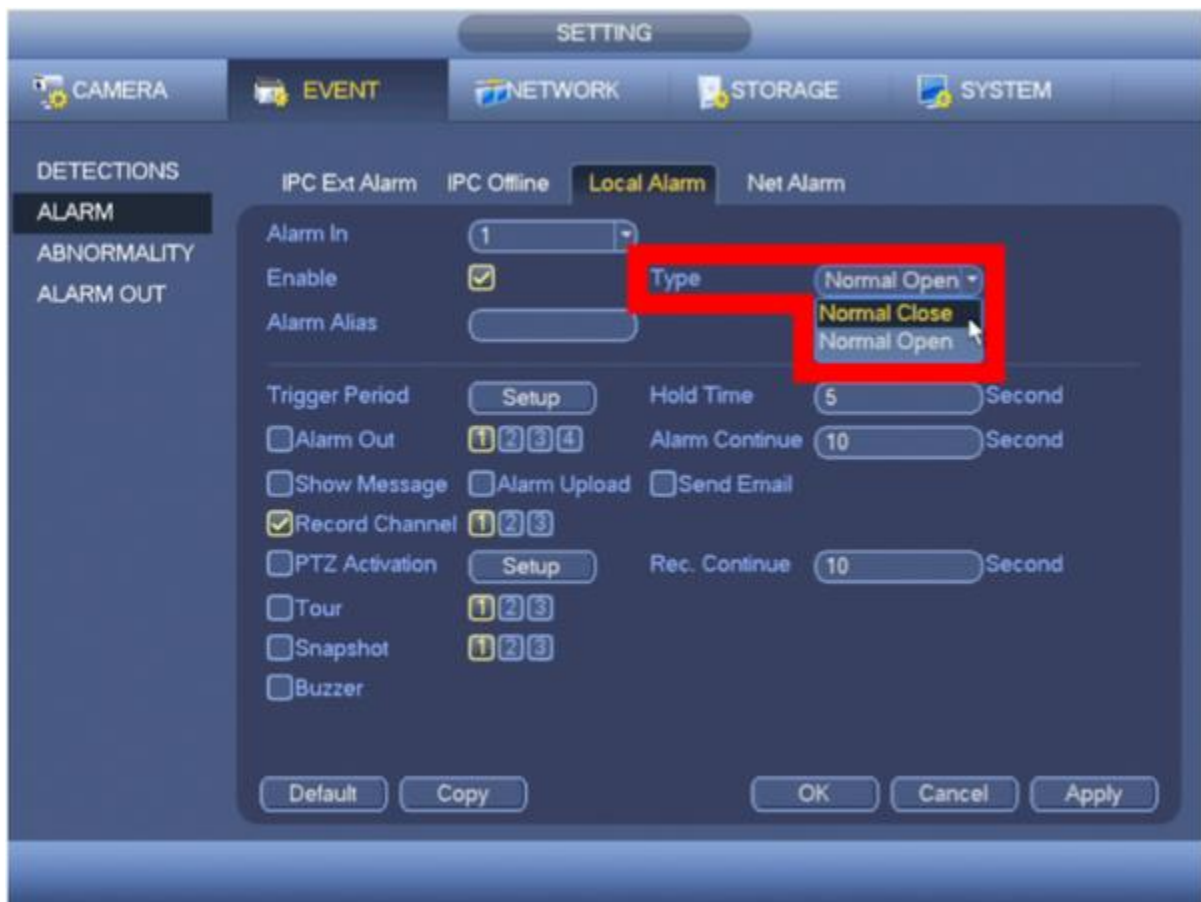


**STEP 7.** Select the **Alarm In** Port you connected from Step 2.



**STEP 8.** Select alarm trigger **Type**

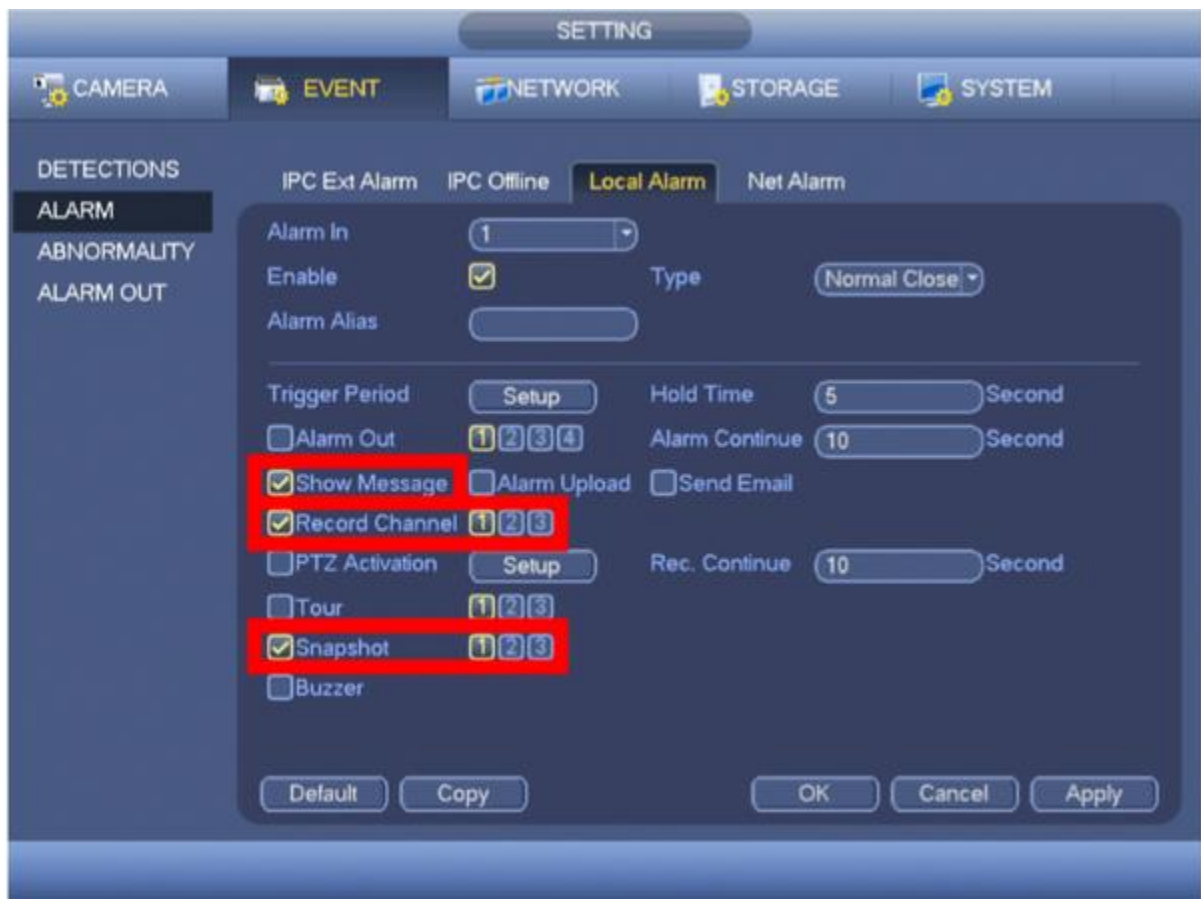
- **Normally Closed:** A Trigger that initiates when an object disrupts the communication line of 2 sensors.
- **Normally Open:** A Trigger that initiates when an object completes the communication line of 2 sensors.



#### STEP 9. Configure the Alarm Trigger Settings

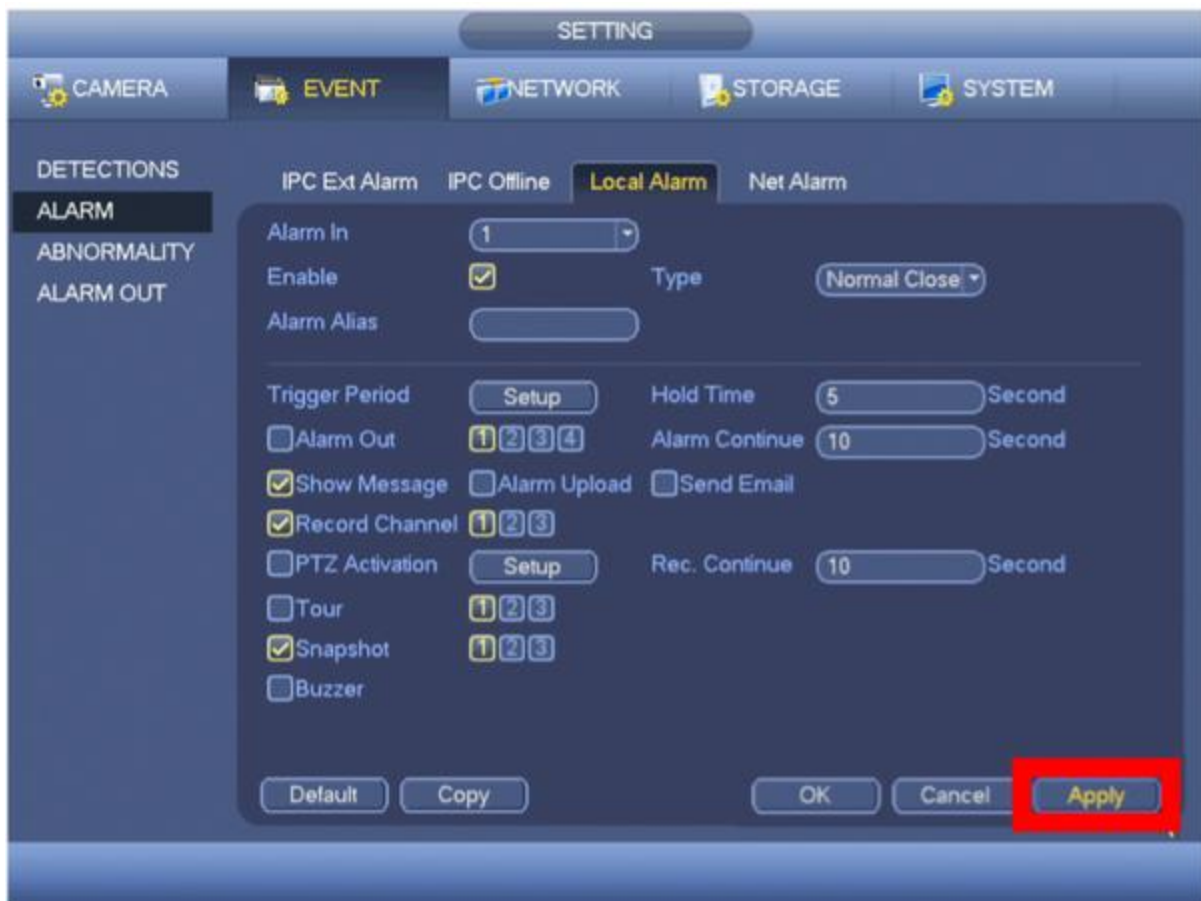
- **Show Message:** An alert will appear on the display attached to the system when the alarm is triggered.
- **Record Channel:** Configure the alarm to trigger recording on a specific channel, or all.
- **Snapshot:** A Snapshot will be taken by a specific channel or all when the alarm is triggered.





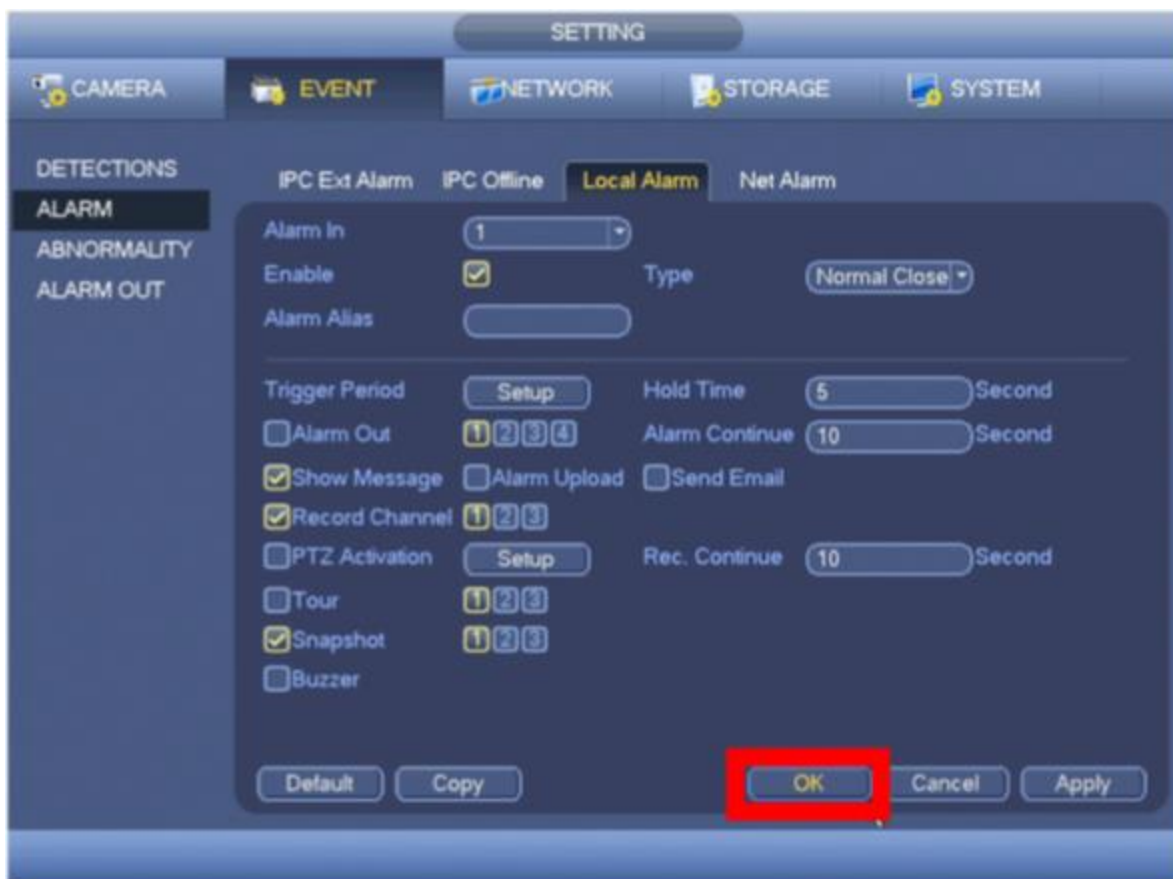
STEP 10. Click **Apply**.





**STEP 11.** Click **OK**

- If you configured the Alarm to "Show a Message", it will appear as soon as the alarm is triggered.



- Right-Click your mouse once to clear the message.

## EVENT

**Device Status** Device(NIC No.:1,HDD No.:1)

No HDD  
Disk Error  
Disk No Space  
**IP Conflict**  
Net Offline  
MAC Conflict

**Channel Status** Channel(CH:16,External Alarm:16)

**External Alarm 1**

Video Loss  
Tampering  
Motion Events  
IPC Ext Alarm  
IPC Offline