

Add 3rd Party IP Camera to NVR

Description

Follow the instructions below to connect a compatible IP camera with a Dahua NVR

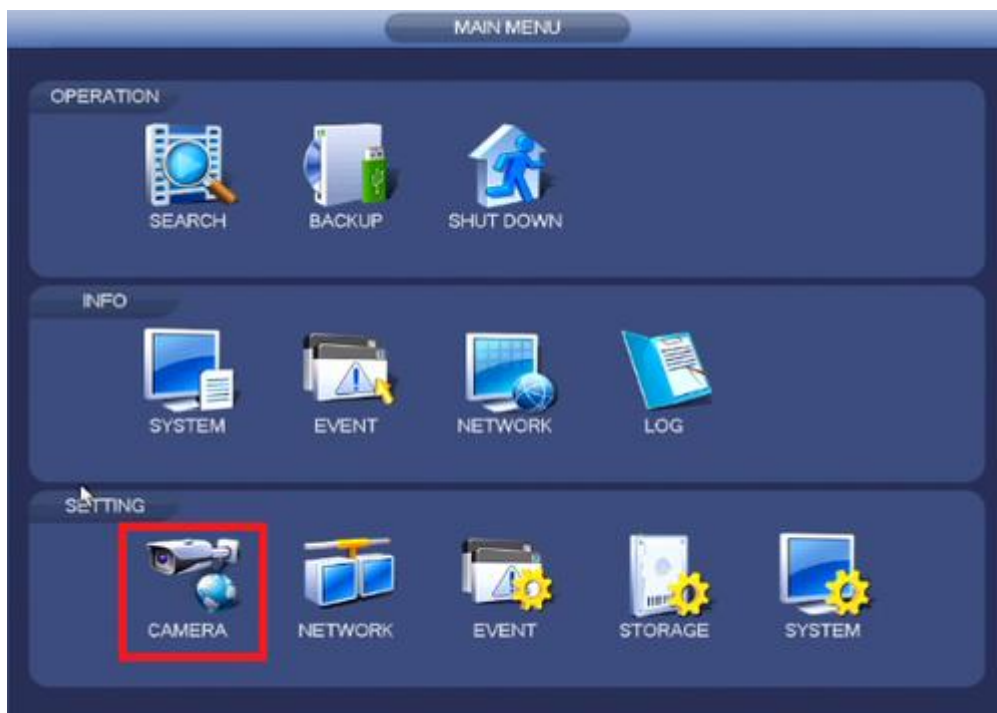
Prerequisites

- 3rd Party ONVIF Capable IP Camera
- IP address of 3rd Party Camera
- Ports used by 3rd Party Camera
- User Name and Password to 3rd Party Camera

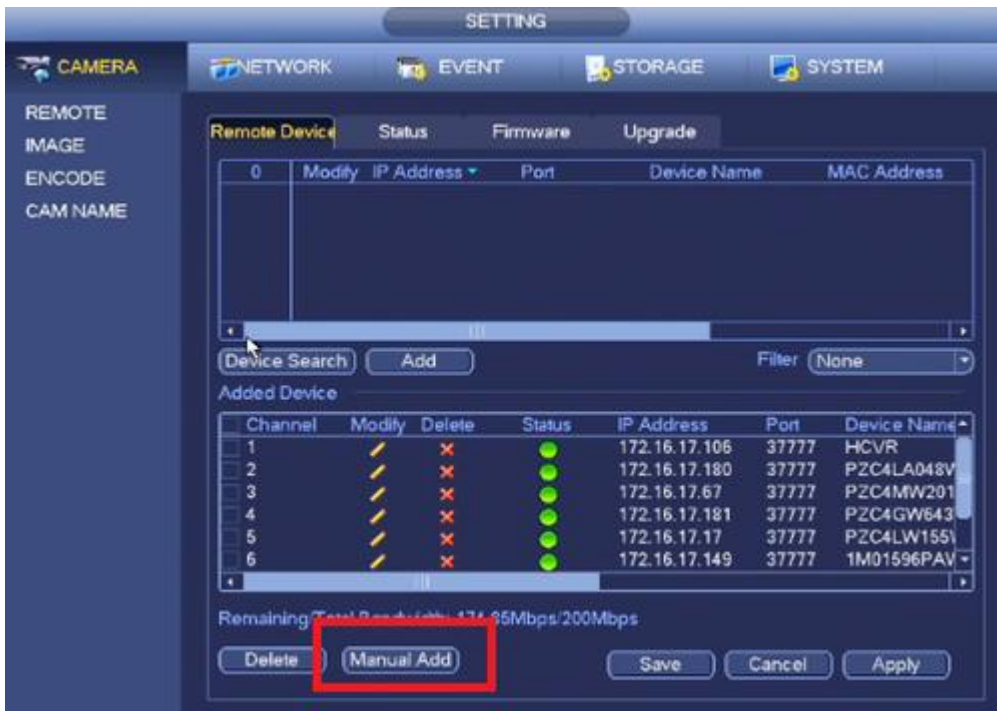
Note: When you are using third party cameras you often lose the ability to use smart features such as a motion detect/IVS

Step by Step Instructions

1. From the Main Menu Select Camera.



2. Select Manual add.



3. You can select the brand of the third-party camera or as ONVIF. If the brand is not listed, you will need to set the IP camera to the ONVIF protocol from the camera itself if it is available as an option.



4. Enter the IP address of the 3rd party camera.

Manual Add

Channel 16

Manufacturer Onvif

IP Address 192.168.0.0

RTSP Port 554 HTTP Port 80

User Name admin

Password ●●●●●

Remote Channel 1

Decoder Buffer Default

Auto TCP UDP MULTICAST

OK Cancel

5. Default ports are RTSP port 554 and HTTP Port 80. It is possible the third-party camera is on different ports than what is showing on the Dahua recorder. You will need to login into the third-party camera and check which ports they are on as each device needs to be on the same ports. Enter User Name and Password of 3rd Party Camera and select OK to save.

Manual Add

Channel

Manufacturer

IP Address

RTSP Port HTTP Port

User Name

Password

Remote Channel

Decoder Buffer

Auto TCP UDP MULTICAST

6. Wait a few minutes for the camera image to load