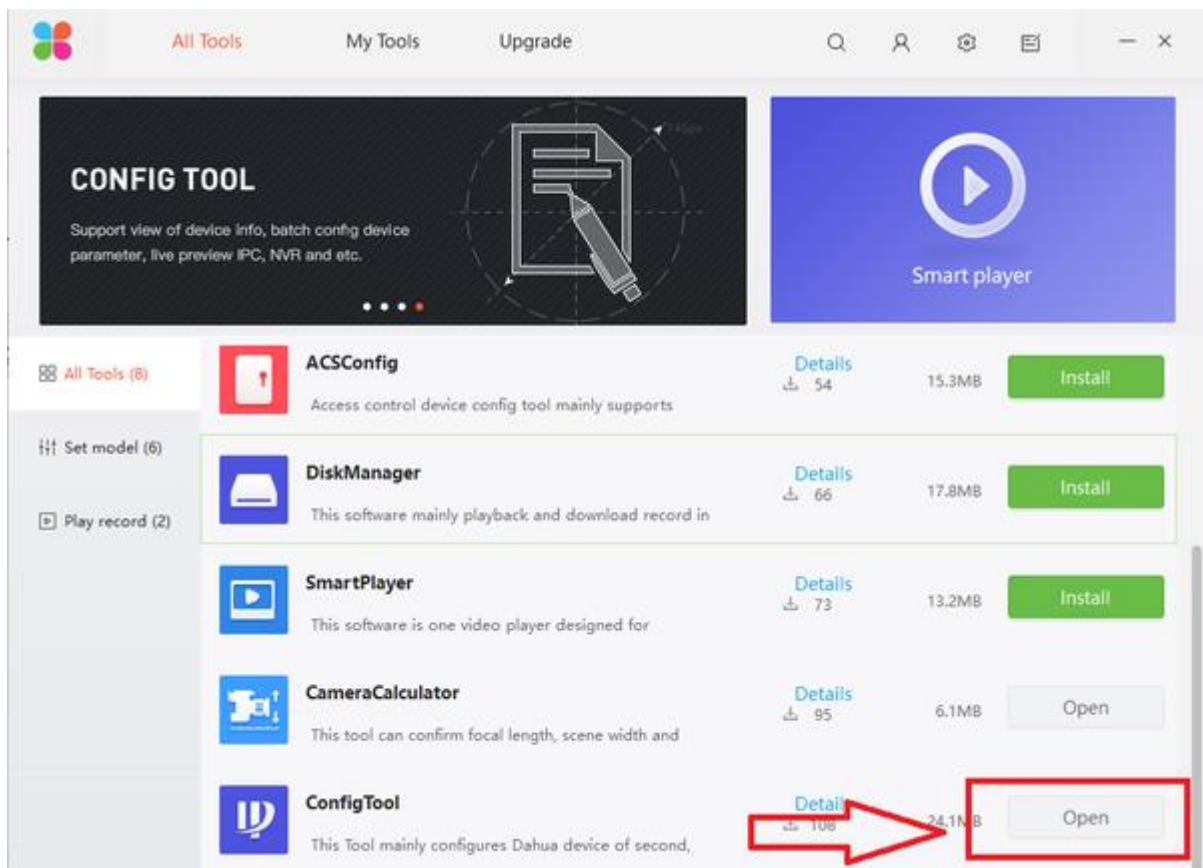


## Step by Step Instructions

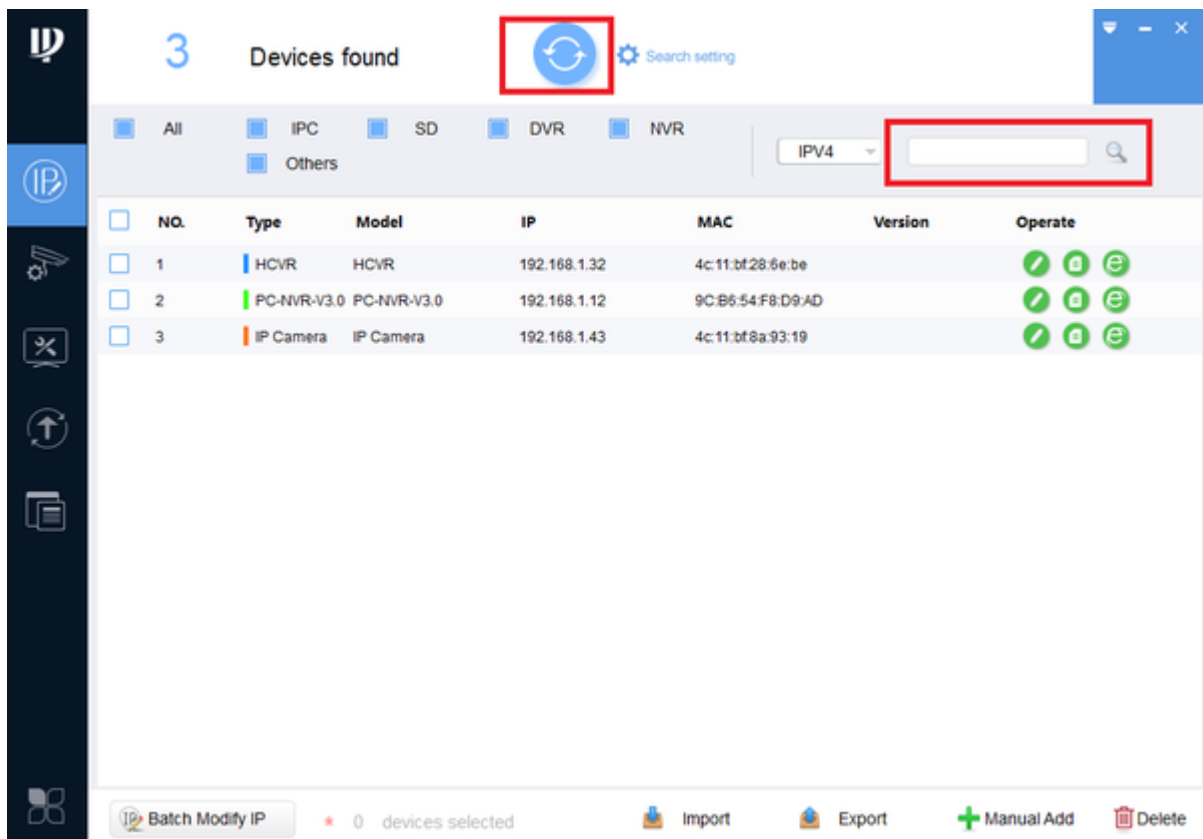
### Download Link:

<https://www.dahuasecurity.com/support/downloadCenter/tools?id=12>

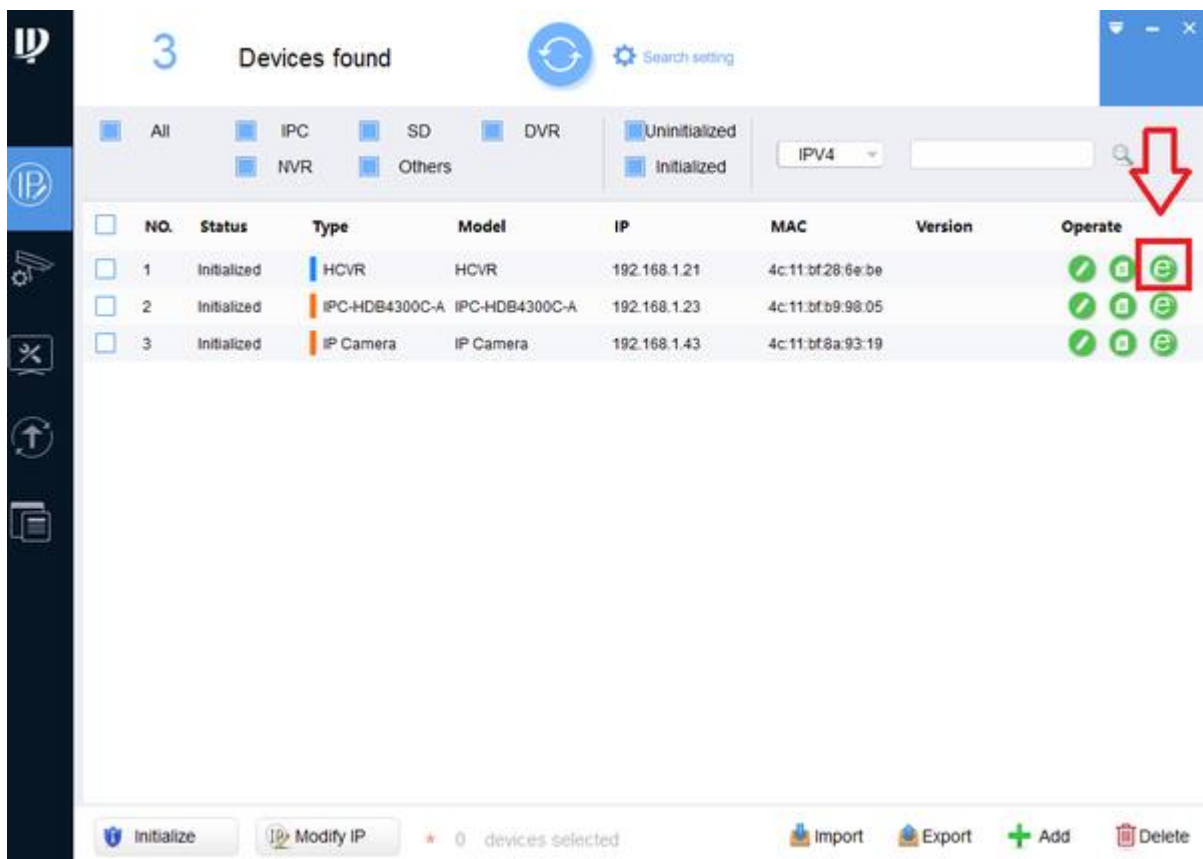
1. With the Dahua Tool box being already installed on your PC, from the Toolbox home menu select install/open "ConfigTool".



2. Upon opening the ConfigTool application, here you can see where Dahua Devices on the same LAN are located. Refresh if Dahua devices are not found. You can also manually locate the device by typing in the IP address of the device in the search.



3. To view the device live click on the IE (Internet Explorer) icon.



- This will open an IE web browser to access the web service of the device.



- From this step, by logging in you can select live view.

